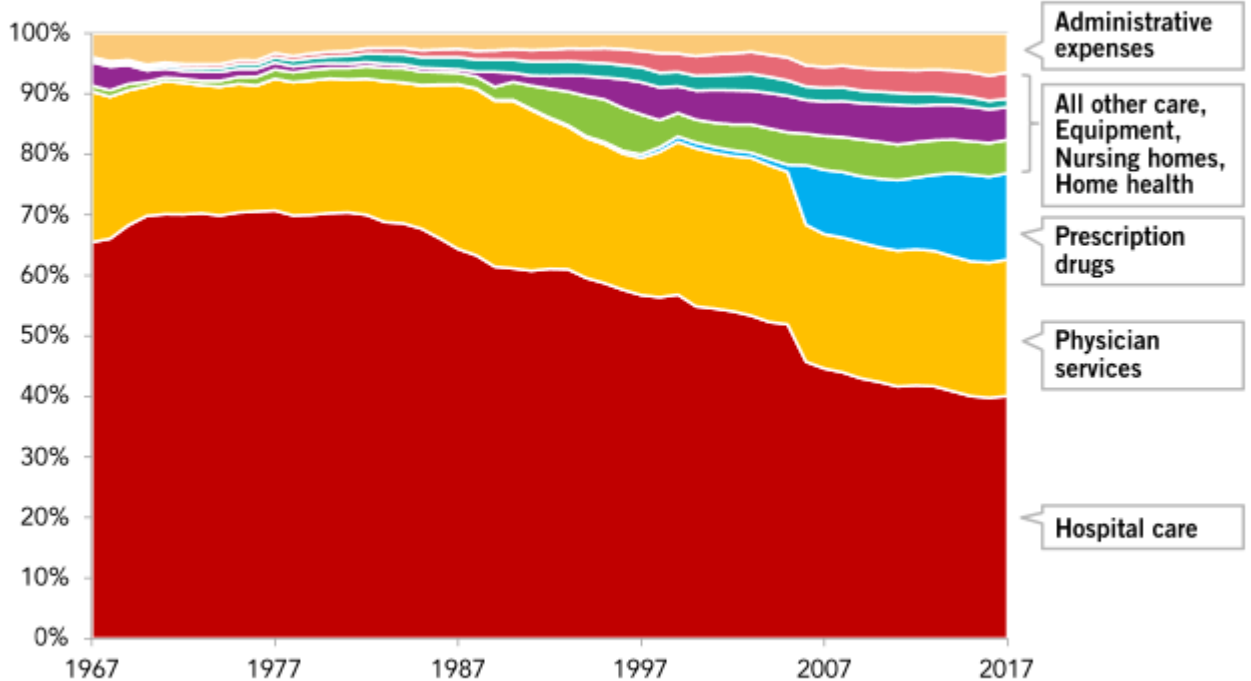


# The Composition of Medicare Spending over Time



Hospital expenses are the largest category of Medicare spending, but their share has fallen over time

COMPOSITION OF MEDICARE PAYMENTS (% OF TOTAL MEDICARE SPENDING)



Feb 6, 2019

SOURCE: Centers for Medicare and Medicaid Services, National Health Expenditures, December 2018. Compiled by PGPF.  
© 2019 Peter G. Peterson Foundation

[PGPF.ORG](http://PGPF.ORG)

**Download: [Image](#) | [PDF](#) | [More Charts](#)**

**Peter G. Peterson Foundation Chart Pack:**



The PGPF chart pack illustrates that budget-making involves many competing priorities, limited resources, and complex issues. In this set of charts, we aim to frame the financial condition and fiscal outlook of the U.S. government within a broad economic, political, and demographic context.

Download (.PDF)

- [Careers](#)
- [Terms of use](#)
- [Copyright policy](#)
- [Permissions](#)
- [Privacy policy](#)
- [Sitemap](#)

© 2019 Peter G. Peterson Foundation. All rights reserved.

---

**Source URL:** [https://www.pgpf.org/chart-archive/0089\\_composition\\_medicare\\_payments](https://www.pgpf.org/chart-archive/0089_composition_medicare_payments)