

Immigration, Diversity and Political Change

Jason Anastasopoulos

Assistant Professor

School of Public and International Affairs

Institute for Artificial Intelligence

University of Georgia

Immigration and political change: mechanisms

- 1. Naturalization**
- 2. Attitude polarization**
- 3. Geographic polarization**

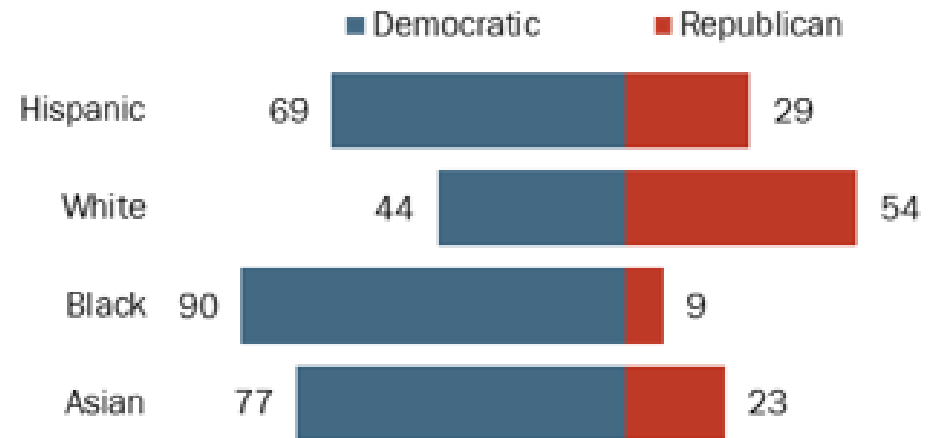
Immigration and political change: naturalization

- Immigrants vote overwhelmingly Democrat & reside in urban areas.

↑ growing urban—rural political divide.

Many more Latinos voted for Democrats than Republicans in 2018 U.S. congressional races

% who say they voted for the ___ candidate in the election for House of Representatives



Source: Based on exit polls conducted by Edison Research for the National Election Pool, as reported by CNN, accessed Nov. 9, 2018.

PEW RESEARCH CENTER

Immigration and political change: attitude polarization

- Contact w/ immigrants, leads to polarizing political views among natives. (Enos 2014)

Causal effect of intergroup contact on exclusionary attitudes



Ryan D. Enos

PNAS March 11, 2014 111 (10) 3699-3704; <https://doi.org/10.1073/pnas.1317670111>

Edited by David D. Laitin, Stanford University, Stanford University, CA, and approved January 21, 2014
(received for review September 18, 2013)

Table 1.
Experiment results

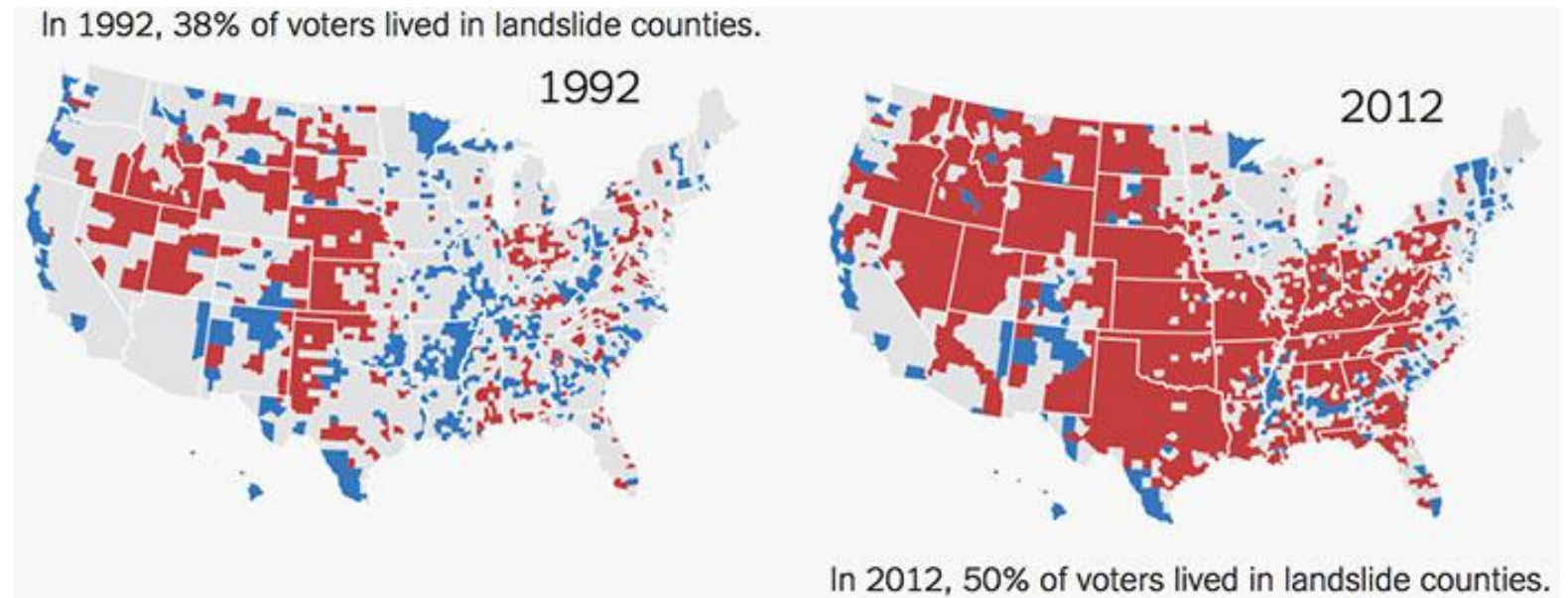
[View popup](#)

Question	All respondents	Waits on platform	All respondents
Question	ATE (P)*	CATE (P)	T1 levels (SD)
Number of immigrants be increased?†	0.09 (0.008)	0.083 (0.012)	0.489 (0.272)
Children of undocumented be allowed to stay?	0.073 (0.016)	0.098 (0.016)	0.441 (0.362)
English as official language?	0.03 (0.27)	0.043 (0.152)	0.619 (0.364)
<i>n</i>	109	100	109

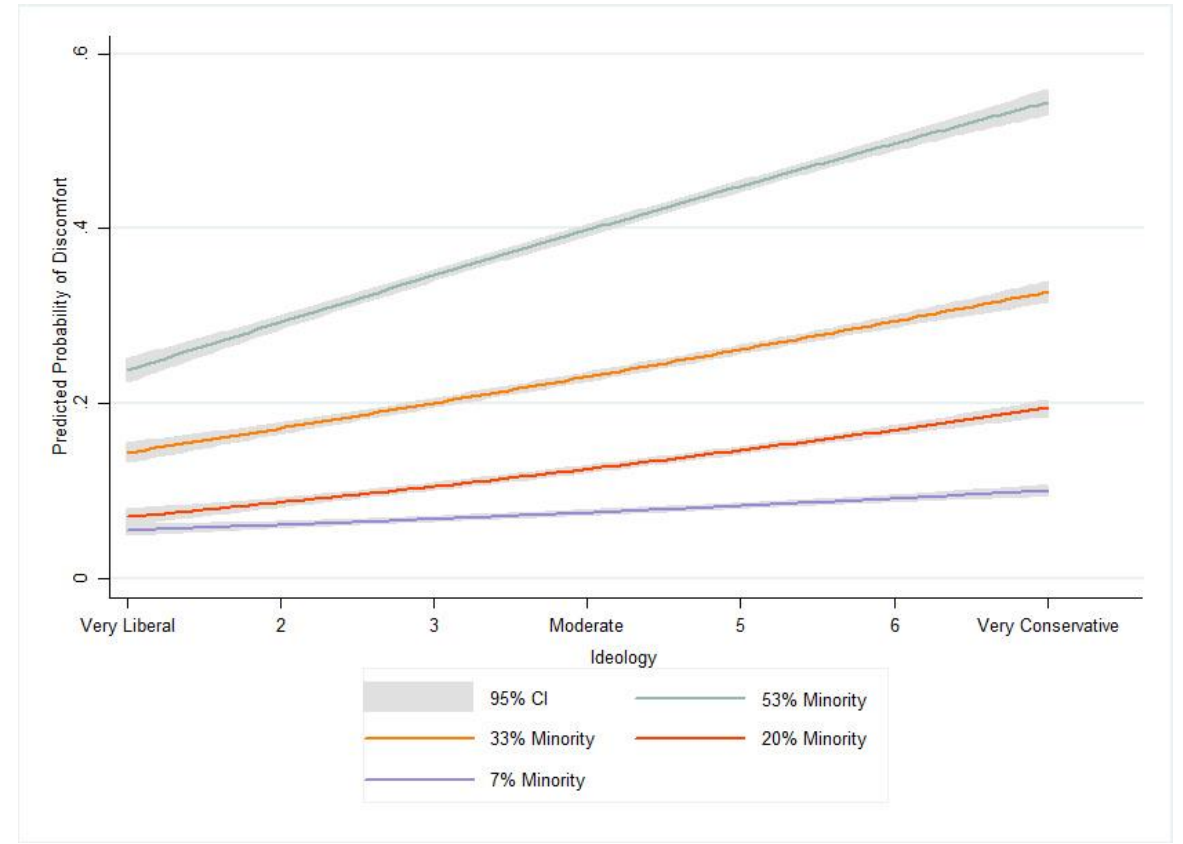
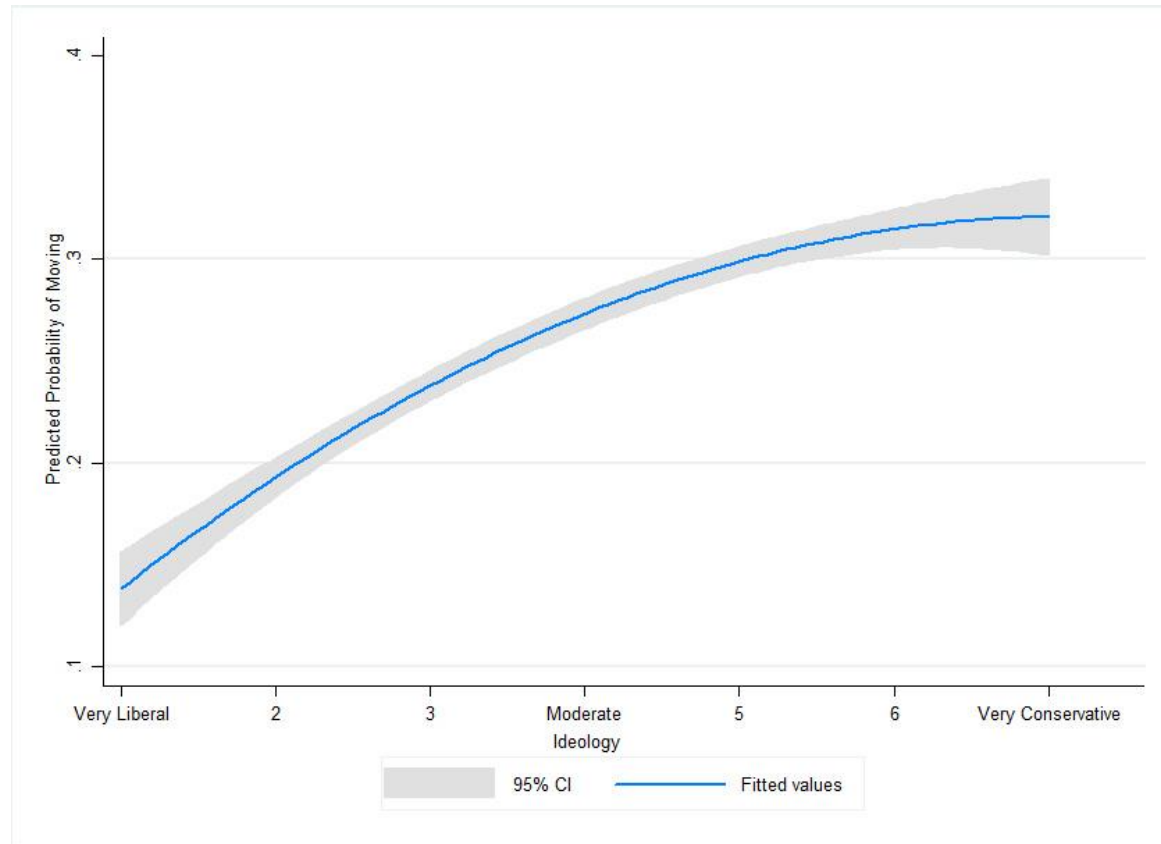
Immigration and political change: geographic polarization and conservative flight

- Immigration leads to geographic polarization via “conservative flight” mechanism.

(Anastasopoulos 2017)



Conservatives more likely to relocate & feel discomfort when neighborhood % minority increases



Evidence of conservative flight and geographic polarization from Hurricane Katrina migration

- Steep declines in post-Katrina white enrollment in Houston schools in “conservative” Census tracts as a function of evacuee presence

Table 4 – Change in Houston Independent School District white enrollment as a function of the evacuee enrollment and school neighborhood Republican voting shortly before Katrina migration. All models include fixed effects for 54 zipcodes and school types (Elementary, Middle, High-School).

VARIABLES	Pre-Katrina			
	$\Delta White_{01-05}$	$\Delta White_{02-05}$	$\Delta White_{03-05}$	$\Delta White_{04-05}$
Evacuees X Precinct % Republican, 2004	0.647* (1.393)	0.394 (0.660)	0.098 (0.328)	0.000 (0.002)
Evacuees	-0.388** (0.289)	-0.122* (0.132)	-0.041 (0.063)	-0.001 (0.000)
Precinct % Republican, 2004	-90.38** (45.80)	-11.75 (14.88)	-8.371 (11.48)	-0.071 (0.892)
Schools	272	280	282	284
Zipcodes	54	54	54	54
R-squared	0.419	0.347	0.359	0.200
VARIABLES	Post-Katrina			
	$\Delta White_{05-06}$	$\Delta White_{05-07}$	$\Delta White_{05-08}$	$\Delta White_{05-09}$
Evacuees X Precinct % Republican, 2004	-0.270*** (0.046)	-0.386*** (0.088)	-0.994*** (0.254)	-1.377** (0.513)
Evacuees	0.047 (0.019)	0.076 (0.035)	0.213 (0.088)	0.308 (0.138)
Precinct % Republican, 2004	-19.64* (8.689)	-52.34*** (21.44)	-95.64*** (34.43)	-115.63*** (41.55)
Schools	284	272	261	255
Zipcodes	54	54	54	54
R-squared	0.410	0.482	0.547	0.503

Cluster robust standard errors (by zipcode) in parentheses

*** p<0.01, ** p<0.05, * p<0.1

Evidence of conservative flight and geographic polarization from Hurricane Katrina migration

- Sharp declines in Republican vote share post-Katrina migration.

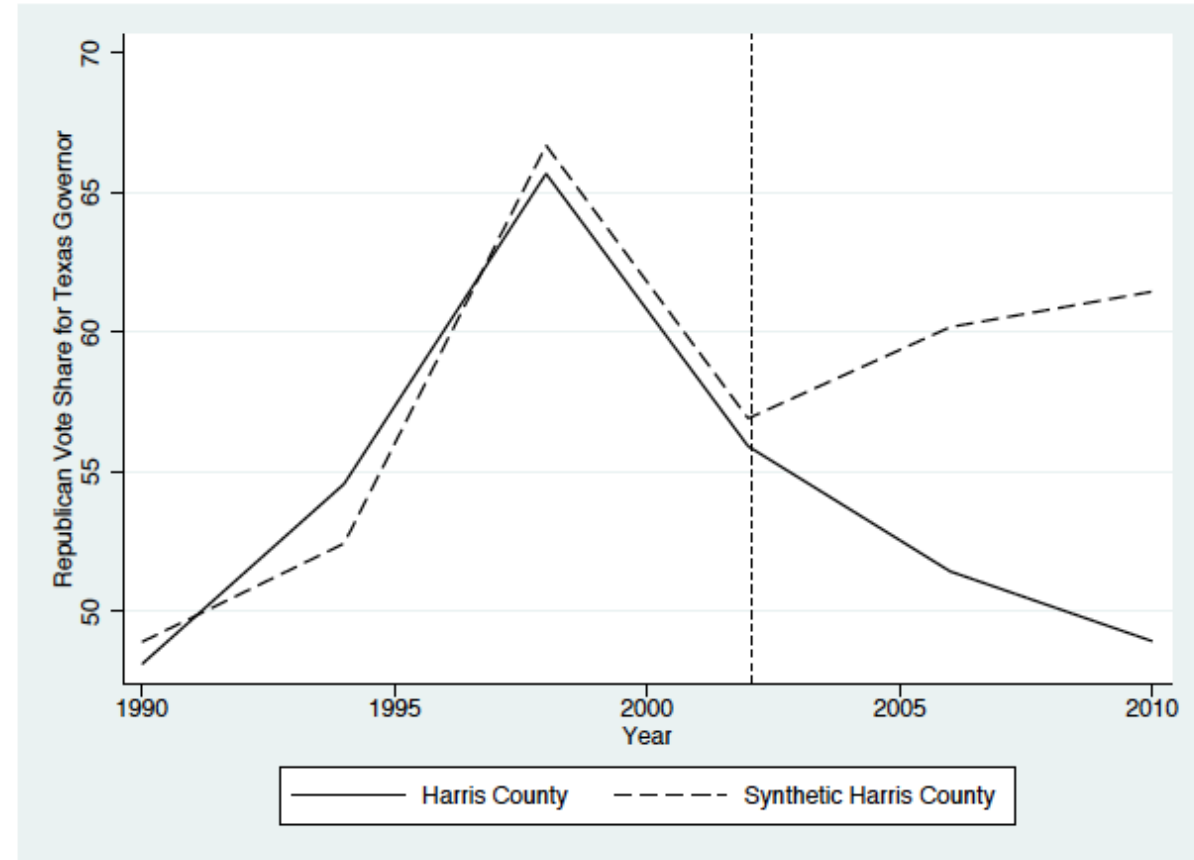


Figure 7 – Republican Vote Share for Governor of Texas, Harris County (R_{it}^K) v. Synthetic Harris County: 1990-2010 ($\sum_{j=2}^J \omega_j^* R_{jt}$).

Evidence of conservative flight and geographic polarization from Hurricane Katrina migration

- Increase in measures of political polarization in the Houston area.

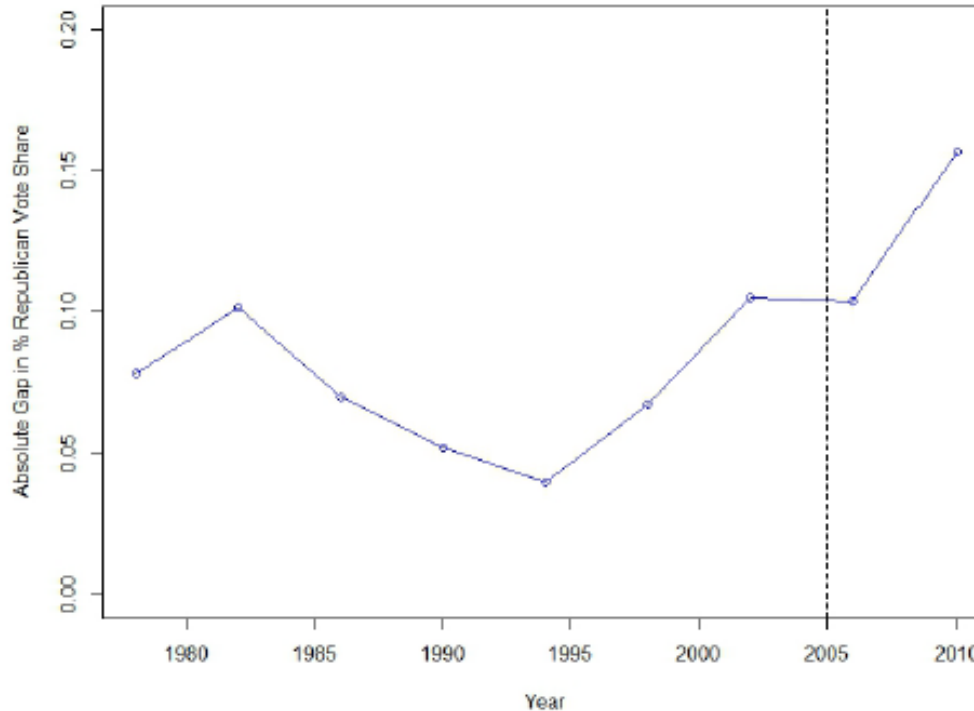


Figure 10 – Absolute Gap in Republican Vote Share For Texas Governor, Harris vs. Surrounding Counties

What does this imply for the future of politics in 2050?



ECONOMIC GROWTH/PROSPERITY



DIVERSITY



POLITICAL/SOCIAL STABILITY



POLITICAL POLARIZATION

What does this imply for the future of politics in 2050?

- As immigration continues to increase, diversity and economic growth while likely increase in American cities.
- Political divides along geographic and ideological lines will likely increase, posing policymaking challenges and challenges to American political institutions.
- These issues may be offset/avoided by increases in immigrant ideological diversity.